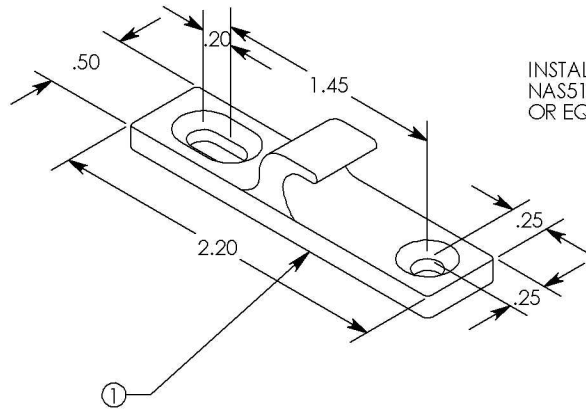
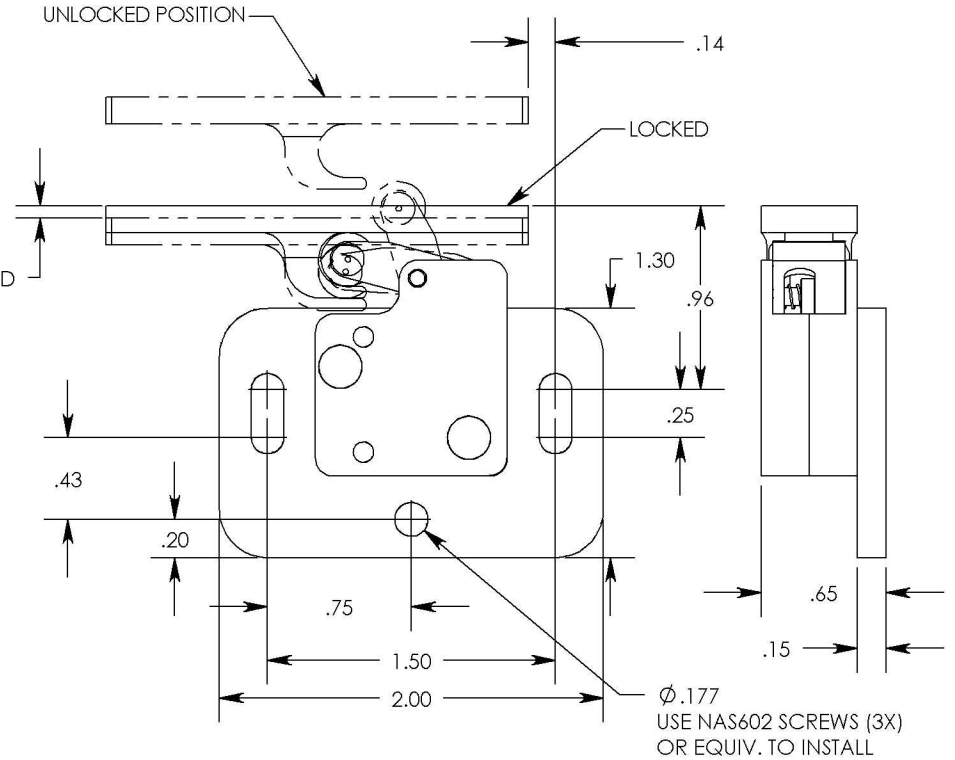


THE INFORMATION CONTAINED IN THIS DRAWING IS THE SOLE PROPERTY OF Saint Louis Designs, Inc. ANY REPRODUCTION IN PART OR WHOLE WITHOUT THE WRITTEN PERMISSION OF Saint Louis Designs, Inc. IS PROHIBITED.

| REVISIONS | | DATE |
|-----------|---|-----------|
| IR | INITIAL RELEASE | 3/7/2001 |
| A | 1157 WAS TRIMMED FOR INTERFERENCE CLEARANCE | 4/26/2001 |
| B | 1156 WAS TRIMMED FOR STANDARDIZATION OF MFG | 4/26/2002 |
| C | MATERIAL CHANGE TO REDUCE WEIGHT | 9/5/2002 |

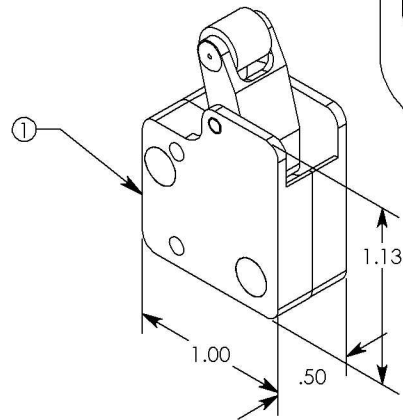


INSTALL CATCH USING NAS17-2 SCREWS (2X) OR EQUIV.



.06 TRAVEL REQUIRED TO UNLOCK FROM LOCKED POSITION.

APPLY LOCTITE 222MS OR EQUIV, 2X



LATCH CAN BE REVERSED ON MOUNT PLATE FOR LEFT OR RIGHT HAND INSTALLATION

| ITEM NO. | QTY. | PART NO. | DESCRIPTION |
|----------|------|-----------|-------------|
| 1 | 1 | TL1150 | TOUCH LATCH |
| 2 | 1 | 1156 | MOUNT PLATE |
| 3 | 2 | NAS601-8P | SCREW, PH |
| 4 | 1 | 1157 | CATCH |

UNLESS OTHERWISE SPECIFIED DIMENSIONS ARE IN INCHES TOLERANCES ARE:

XXX = $\pm .010$
 XXXX = $\pm .005$
 ANGULAR = $\pm 1^\circ$
 SURFACE = 32 RMA OR BETTER

CAD GENERATED DRAWING. DO NOT MANUALLY UPDATE.

| APPROVAL | DATE |
|----------|-----------|
| MSTL | 4/26/2002 |
| CHECKED | |

Saint Louis Designs, Inc.

P.O. BOX 3400, AUSTIN, TX 78764

(800) 431-6684, st-louis@texas.net

MATERIAL
SEE PART DETAILS

FINISH
SEE PART DETAILS

TOUCH LATCH
 WEIGHT = 42 Grams
 LOAD = 300 lbs. plus
 USE WITH EXTERNAL PUSHER

SIZE PART #
 A TL1150SMP

DO NOT SCALE DRAWING

SCALE:

CAD FILE:

SHEET 1 OF 1