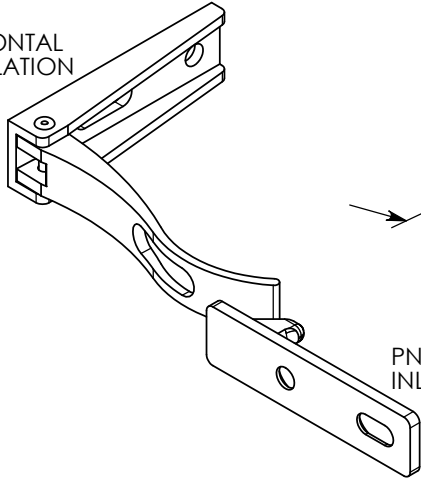


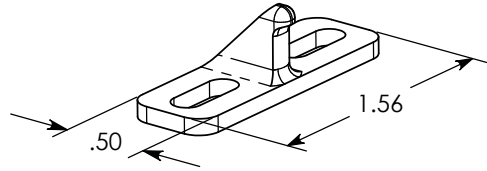
THE INFORMATION CONTAINED IN THIS DRAWING IS THE SOLE PROPERTY OF Saint Louis Designs, Inc. ANY REPRODUCTION IN PART OR WHOLE WITHOUT THE WRITTEN PERMISSION OF Saint Louis Designs, Inc. IS PROHIBITED.

REVISIONS		DATE
IR	INITIAL RELEASE	

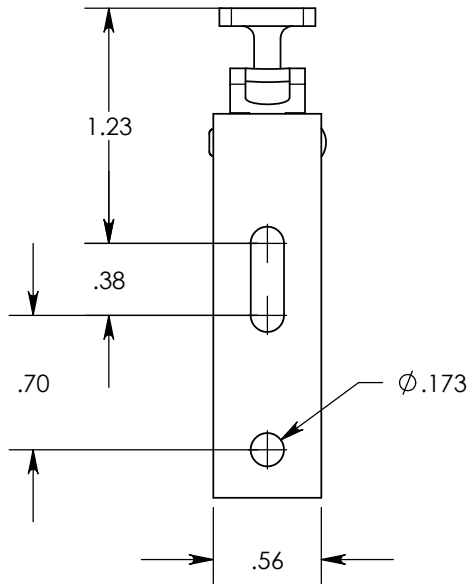
HORIZONTAL INSTALLATION



PN: 1053
CROSS MOUNT STRIKE



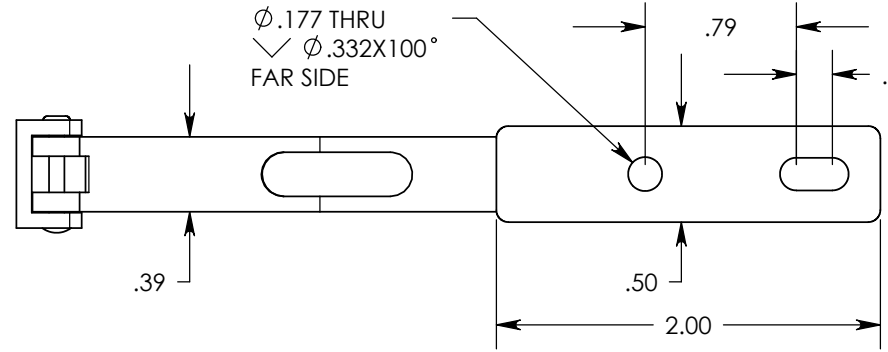
PN: 1073
INLINE STRIKE



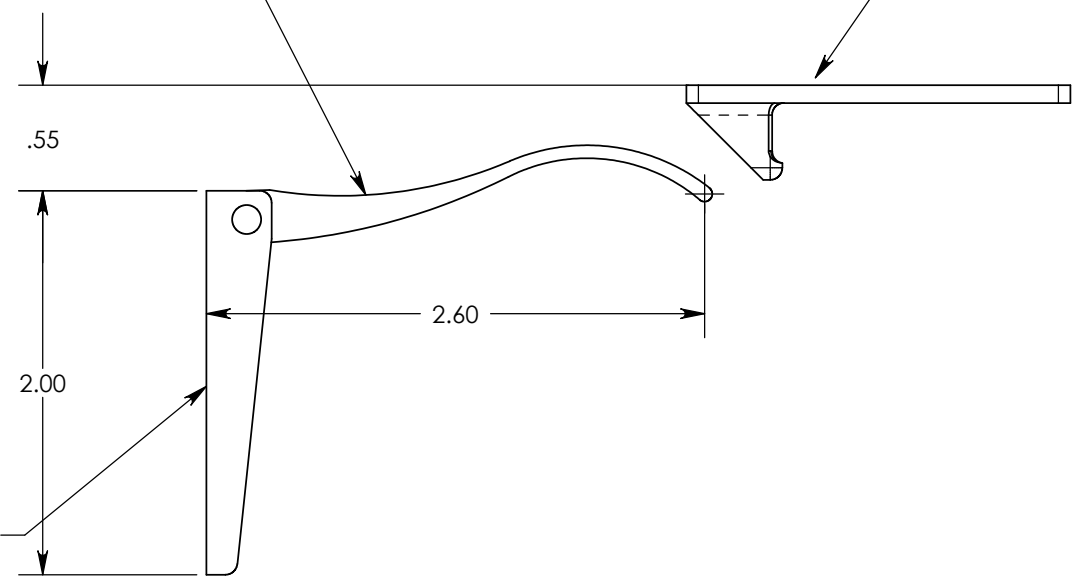
NOTES:

1. INSTALL LATCH USING TWO (2) NAS602 SCREWS
2. LATCH CAN BE INSTALLED VERTICAL OR HORIZONTAL.
3. LATCH CAN BE USED WITH EITHER STRIKE (1053 or 1073).
4. INSTALL STRIKE (PN:1053) USING TWO (2) NAS602 SCREWS;
FOR STRIKE (PN: 1073) USE TWO (2) NAS514-832 SCREWS.

$\phi .177$ THRU
 $\sphericalangle \phi .332 \times 100^\circ$
FAR SIDE



PRESS TO UNLOCK



ATTACH TO DOOR
OR DRAWER

UNLESS OTHERWISE SPECIFIED
DIMENSIONS ARE IN INCHES
TOLERANCES ARE:

XX = $\pm .010$
XXX = $\pm .005$
ANGULAR = $\pm 1^\circ$
SURFACE = 32 RMA OR BETTER

CAD GENERATED DRAWING.
DO NOT MANUALLY UPDATE.

APPROVAL	DATE
DRAWN MSTL	10/5/2002
CHECKED	

MATERIAL
Al 6061-T6
QQ-A-200/8
QQ-A-200/16 or ASTM-B-221
QQ-A-250/11 or ASTM-B-209

FINISH
BLACK ANODIZE
MIL-A-8625F
TYPE 2, CLASS 2

Saint Louis Designs, Inc.

P.O. BOX 3400, AUSTIN, TX 78764

(800) 431-6684, info@saintlouisdsgns.com

SECONDARY LATCH, MINI
WEIGHT: 18 Grams

SIZE PART #
A SC1070

DO NOT SCALE DRAWING

SCALE: CAD FILE: SHEET 1 OF 1