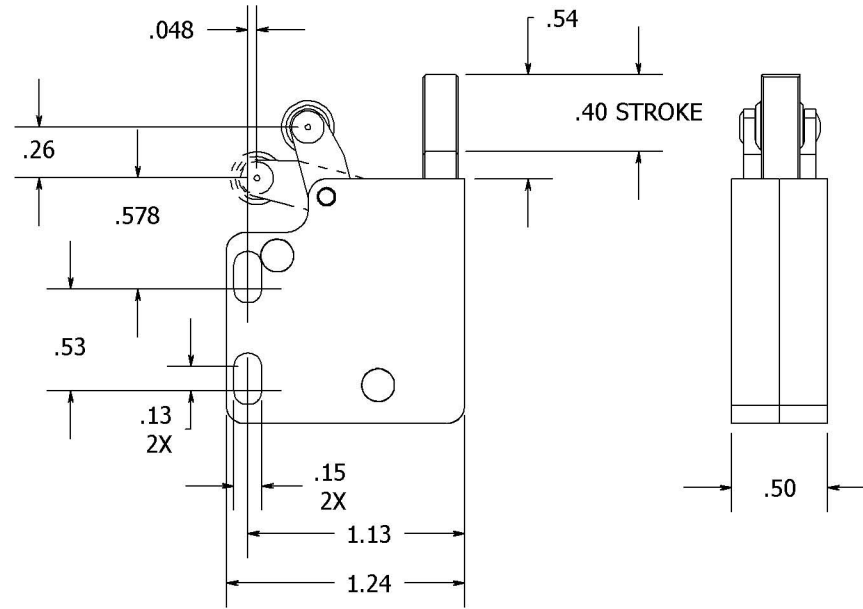
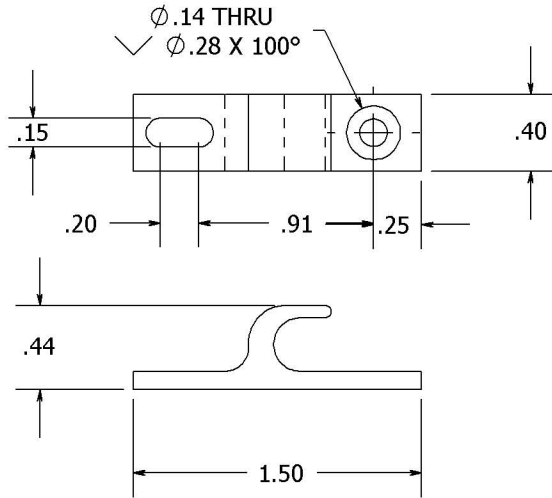


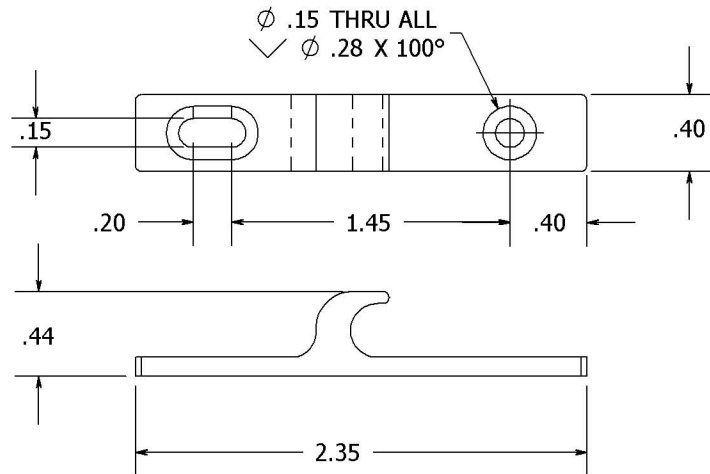
THE INFORMATION CONTAINED IN THIS DRAWING IS THE SOLE PROPERTY OF Saint Louis Designs, Inc. ANY REPRODUCTION IN PART OR WHOLE WITHOUT THE WRITTEN PERMISSION OF Saint Louis Designs, Inc. IS PROHIBITED.

REVISIONS		DATE
IR	INITIAL RELEASE	3/23/05
A	ADDED OPTIONAL STRIKES	5/15/2006

**OPTIONAL STRIKE
PN: 1012**



**OPTIONAL STRIKE
PN: 1168**



NOTES:

INSTALL LATCH USING NAS601 SCREWS OR EQUIV (2X) THROUGH LATCH BODY INTO STRUCTURE.

INSTALL OPTIONAL STRIKE USING ONE NAS514-632 SCREW AND ONE NAS601 SCREW.

UNLESS OTHERWISE SPECIFIED DIMENSIONS ARE IN INCHES TOLERANCES ARE: XX = ±.010 XXX = ±.005 ANGULAR = ±1° SURFACE = 32 RMA OR BETTER	CAD GENERATED DRAWING. DO NOT MANUALLY UPDATE.		Saint Louis Designs, Inc. P.O. BOX 3400, AUSTIN, TX 78764 (800) 431-6684, www.saintlouisdesigns.com	
	APPROVAL	DATE		
MATERIAL VARIOUS	DRAWN MSTL	8/16/06	TOUCH LATCH W/ INTEGRAL 5# PUSHER LOAD: 200 Lbs.	
FINISH BLACK ANODIZE MIL-A-8625F TYPE 2, CLASS 2	CHECKED			
DO NOT SCALE DRAWING		SCALE:	CAD FILE:	SHEET 1 OF 1