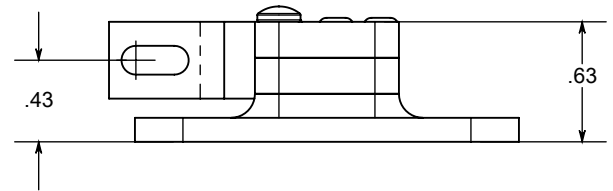
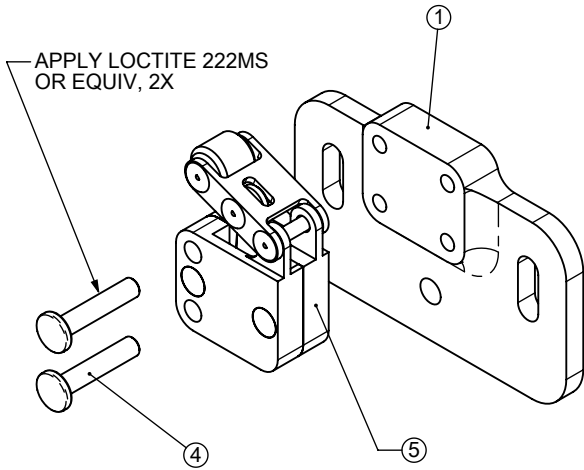
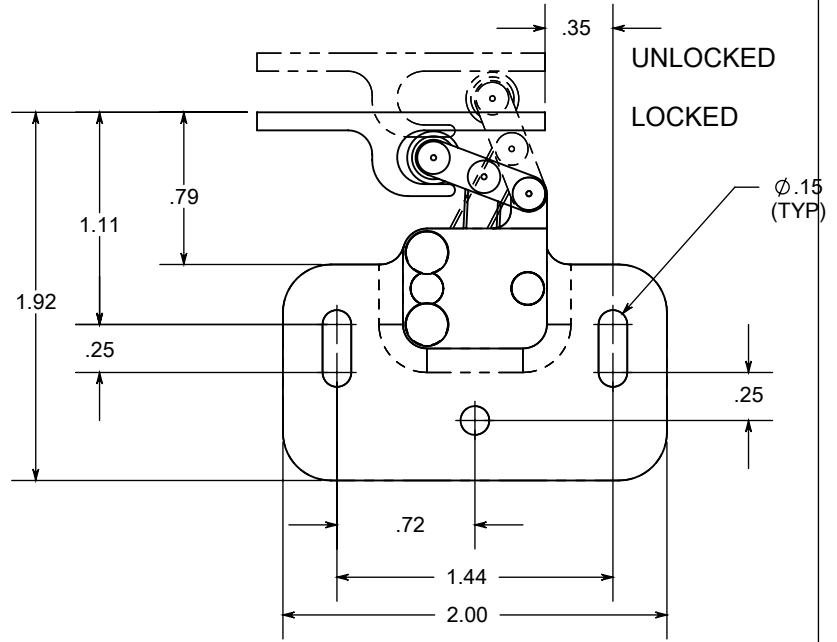
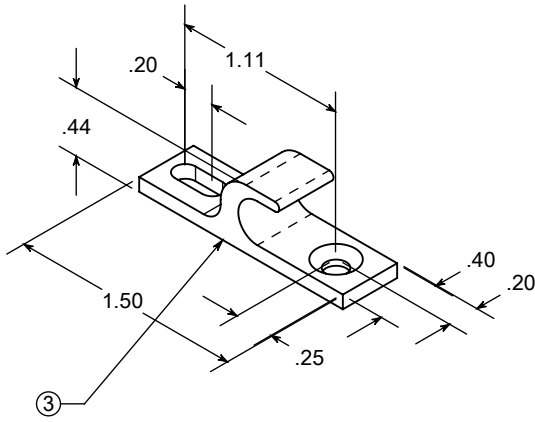


REVISIONS		DATE
IR	INITIAL RELEASE	1/19/2000
A	INCREASED ROLLER DIAMETER, FROM ϕ .25 TO ϕ .27; PN:1006 REPLACED PN:13SP039B IN BOM	3/5/2000
B	REDRAWN IN NEW SOFTWARE; NO BOM CHANGE	5/22/2000
C	REDRAWN WITH SOFTWARE UPGRADE, NEW ASSEMBLY RELATIONS; NO BOM CHANGE	5/27/2000
D	PN: 1007 REV. E; MS20426AD3-8 REPLACED CCR264SS3-4, WITHIN PN: TL1000	2/05/2001
E	REDUCED QTY MS20426AD3-8 FROM 3 TO 2	12/16/2004
F	TL1000 REPLACED WITH TL1000-T, DOES NOT AFFECT ANY PRIOR INSTALLATIONS	7/10/2006
G	STANDARDIZATION OF MOUNT PLATE, PN: 1011 & TITLE BLOCK UPDATE	7/15/2013



NOTES:

1. INSTALL CATCH USING ONE (1) NAS601 AND ONE NAS514-632 SCREWS.
2. INSTALL LATCH USING THREE (3) NAS601 SCREWS.
3. REQUIRED TRAVEL TO UNLOCK: 0.15"
4. LATCH CAN BE USED LEFT OR RIGHT HAND ON MOUNT PLATE.
5. RECOMMENDED USE WITH EXTERNAL PUSHER.
6. ASSEMBLY INCLUDES MOUNT PLATE AND CATCH.

ITEM NO.	QTY.	PART NO.	DESCRIPTION
1	1	1011	MOUNT PLATE
3	1	1012	CATCH
4	2	NAS600-9P	SCREW, PH
5	1	TL1000-T	TOUCH LATCH

<p>PROPRIETARY AND CONFIDENTIAL</p> <p>THE INFORMATION CONTAINED IN THIS DRAWING IS THE SOLE PROPERTY OF SAINT LOUIS DESIGNS. ANY REPRODUCTION IN PART OR AS A WHOLE WITHOUT THE WRITTEN PERMISSION OF SAINT LOUIS DESIGNS IS PROHIBITED.</p>		<p>UNLESS SPECIFIED OTHERWISE DIMENSIONS ARE IN INCHES TOLERANCES: ANGULAR: $\pm 1^\circ$ TWO PLACE DECIMAL ± 0.01 THREE PLACE DECIMAL ± 0.005 SURFACE FINISH: 32 RMA</p>	NAME	DATE	<p>Saint Louis Designs, Inc. PO BOX 3400, Austin, TX78764 512-472-4711, www.saintlouisdesigns.com</p>		
			DRAWN	MSTL		7/15/2013	
			CHECKED				
			ENG APPR.				
		MATERIAL	7075-T651		<p>TL1000RMP</p>		
			QQ-A-225/8				
		FINISH	BLACK ANODIZE				
			MIL-A-8625, TYPE 2 CLASS 2		SIZE	DWG. NO.	REV.
			DO NOT SCALE DRAWING		A	TL1000RMP	G
					SCALE:1:1	WEIGHT:	SHEET 1 OF 1