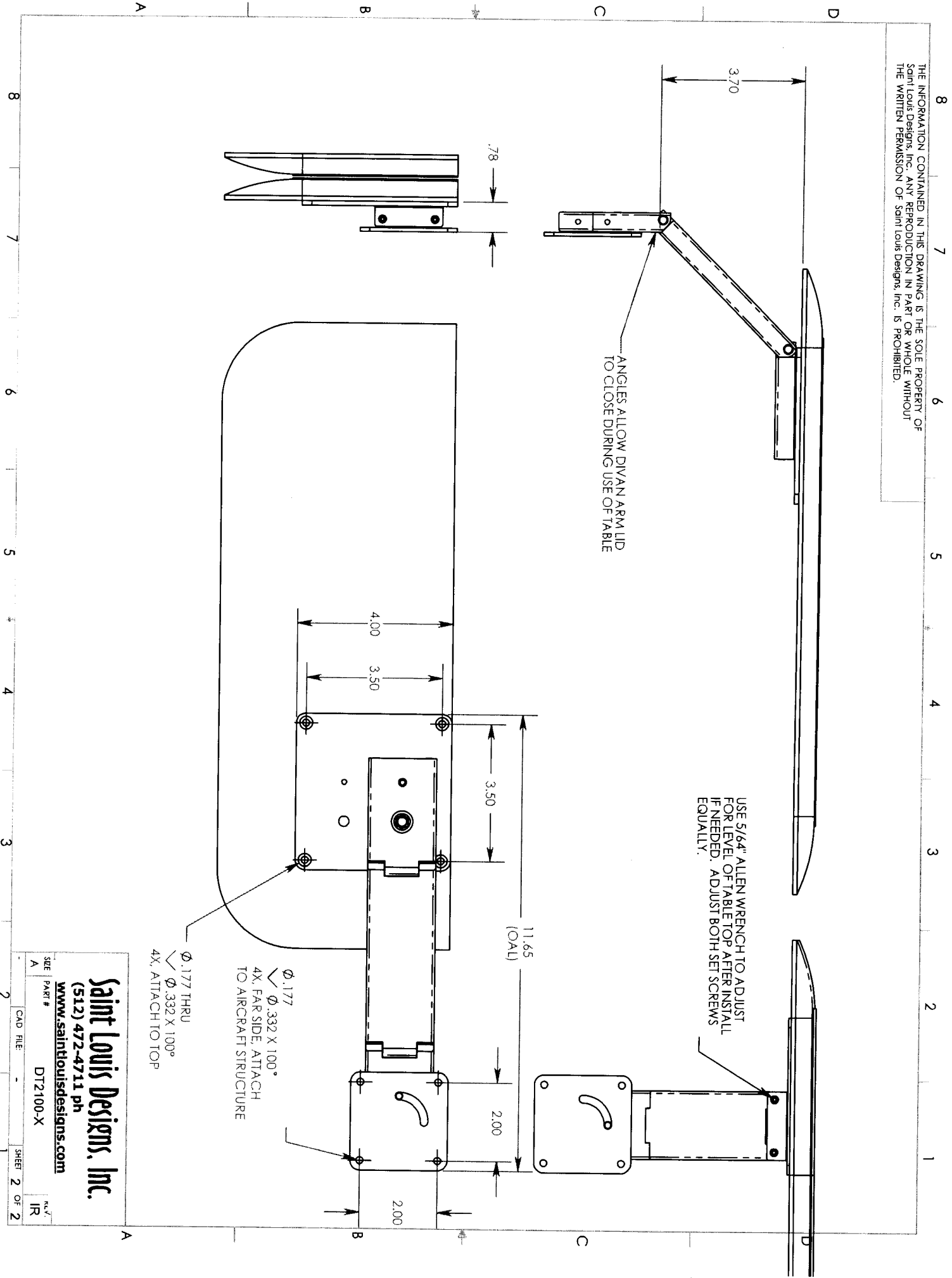


THE INFORMATION CONTAINED IN THIS DRAWING IS THE SOLE PROPERTY OF Saint Louis Designs, Inc. ANY REPRODUCTION IN PART OR WHOLE WITHOUT THE WRITTEN PERMISSION OF Saint Louis Designs, Inc. IS PROHIBITED.



USE 5/64" ALLEN WRENCH TO ADJUST FOR LEVEL OF TABLE TOP AFTER INSTALL IF NEEDED. ADJUST BOTH SET SCREWS EQUALLY.

ANGLES ALLOW DIVAN ARM LID TO CLOSE DURING USE OF TABLE

\checkmark ϕ .177
 \checkmark ϕ .332 X 100°
 4X, FAR SIDE, ATTACH TO AIRCRAFT STRUCTURE

\checkmark ϕ .177 THRU
 \checkmark ϕ .332 X 100°
 4X, ATTACH TO TOP

Saint Louis Designs, Inc.

(512) 472-4711 ph

www.saintlouisdesigns.com

SIZE PART # DT2100-X

CAD FILE: IR
 SHEET 2 OF 2