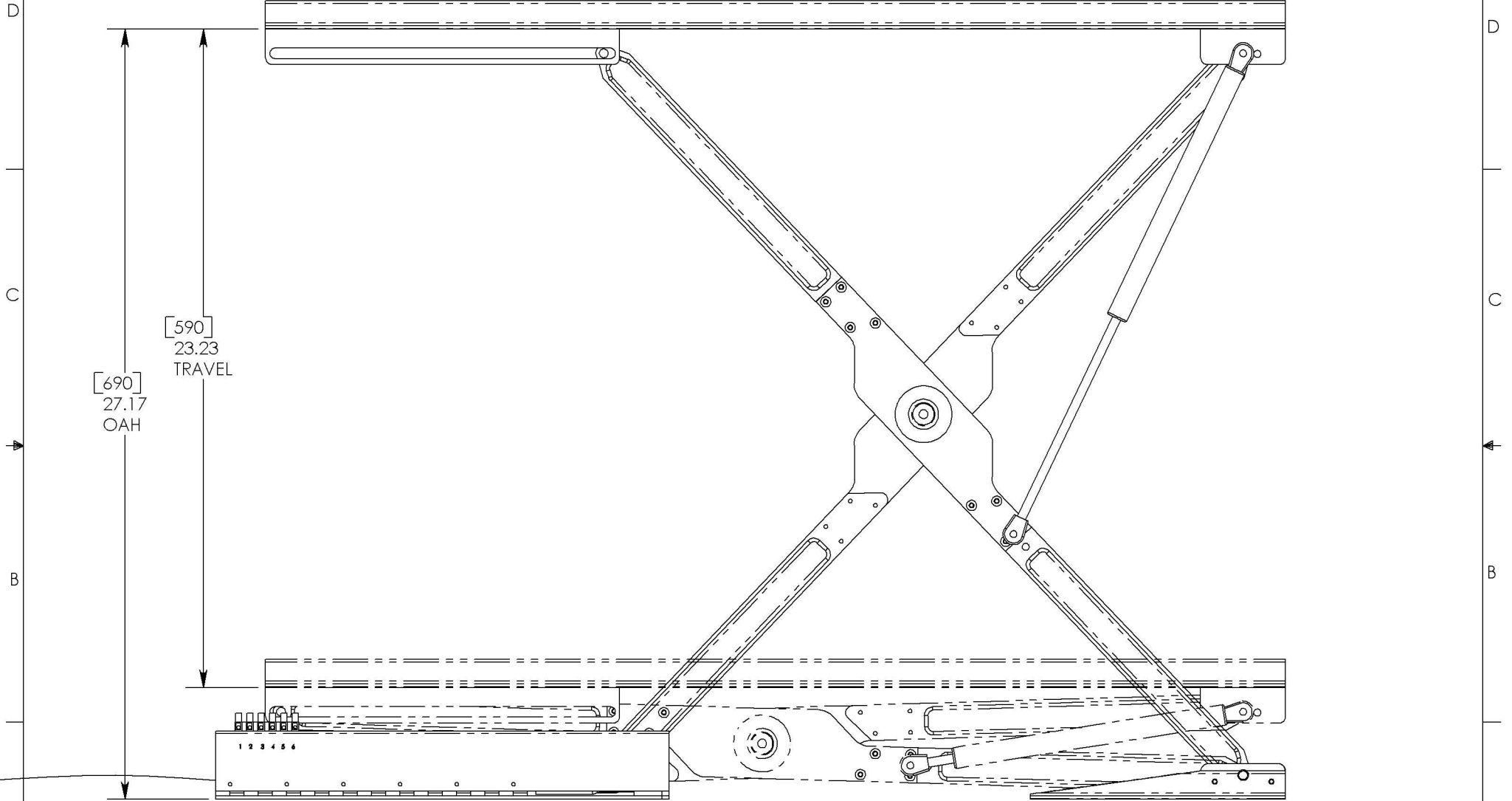


THE INFORMATION CONTAINED IN THIS DRAWING IS THE SOLE PROPERTY OF Saint Louis Designs, Inc. ANY REPRODUCTION IN PART OR WHOLE WITHOUT THE WRITTEN PERMISSION OF Saint Louis Designs, Inc. IS PROHIBITED.

# RAISED VIEW

ATTACH MOVING PANEL TO ANGLE



<<< RELEASE CABLE >>>

**PROVIDE ROOM FOR MOVEMENT OF CABLE.**

NOTES:

1. 9200-590 UNIT IS PROVIDED WITH 60' (1525mm) PANEL GUIDE RAILS, SEE DETAIL SHEET 4.
2. RAIL SLIDERS ARE ADJUSTABLE TO COMPENSATE FOR PANEL THICKNESS.
3. EMERGENCY RELEASE CABLE (SEE DETAIL SHEET 4) IS PROVIDED WITH A 72' (1839mm) CABLE TO ALLOW FOR REMOTE LOCATION. DO NOT JAM OR BIND CABLE. ALLOW CABLE TO SLIDE DURING USE OF THE LIFT.

<b>Saint Louis Designs, Inc.</b>			
P.O. BOX 3400, AUSTIN, TX 78764 (800) 431-6684, <a href="mailto:st-louis@texas.net">st-louis@texas.net</a>			
SIZE	PART #	9200-590, RAISED VIEW	
A			
CAD FILE:		9200-XXX	SHEET 2 OF 5